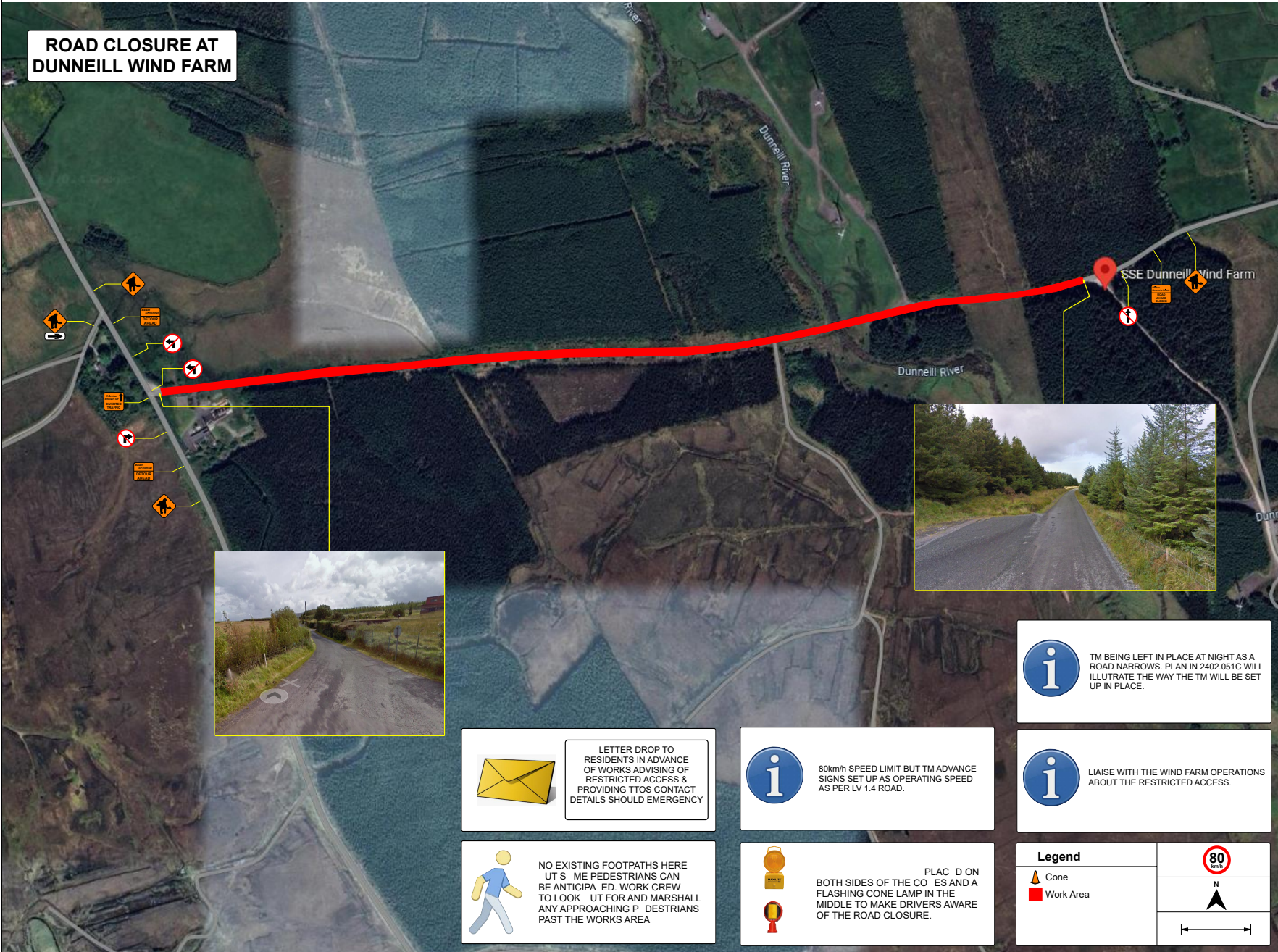



**ROAD CLOSURE AT  
DUNNEILL WIND FARM**




<b>TM TYPE SELECTION</b>	Road_Closure/Detour
<b>CONSULTATION WITH</b>	Garda_Via_E-mail
<b>PEDESTRIAN ROUTE</b>	See_Notes
<b>ROAD CROSS SECTION</b>	5m
<b>WORK ZONE WIDTH</b>	5m
<b>LATERAL SAFETY ZONE</b>	N/A
<b>UNOBSTRUCTED WIDTH</b>	N/A
<b>CONE SIZE</b>	750mm
<b>SIGN SIZE</b>	600mm
<b>TAPER LENGTH</b>	N/A
<b>TEMP TM SUPERVISOR</b>	TBC
<b>ROAD WORKS TYPE</b>	N/A
<b>LV ROAD TYPE</b>	LV_2.1(1.4)
<b>ADVANCE SIGN DISTANCE</b>	180m
<b>ADVANCE SIGN No</b>	3
<b>ADVANCE SIGN SPACING</b>	60m
<b>END WORKS SIGN DIST.</b>	N/A
<b>LONGWAYS SAFETY ZONE</b>	N/A
<b>CONE SPACING - TAPER</b>	N/A
<b>CONE SPACING - LENGTH</b>	N/A
<b>MAX SHUTTLE LENGTH</b>	N/A
<b>CENTRE-LINE CONING</b>	No
<b>SPEED LIMIT ORDER</b>	No
<b>SIGN VISIBILITY</b>	60m




LETTER DROP TO RESIDENTS IN ADVANCE OF WORKS ADVISING OF RESTRICTED ACCESS & PROVIDING TTOS CONTACT DETAILS SHOULD EMERGENCY




80km/h SPEED LIMIT BUT TM ADVANCE SIGNS SET UP AS OPERATING SPEED AS PER LV 1.4 ROAD.




TM BEING LEFT IN PLACE AT NIGHT AS A ROAD NARROWS. PLAN IN 2402.051C WILL ILLUSTRATE THE WAY THE TM WILL BE SET UP IN PLACE.



LIAISE WITH THE WIND FARM OPERATIONS ABOUT THE RESTRICTED ACCESS.





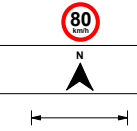
NO EXISTING FOOTPATHS HERE BUT SOME PEDESTRIANS CAN BE ANTICIPATED. WORK CREW TO LOOK OUT FOR AND MARSHALL ANY APPROACHING PEDESTRIANS PAST THE WORKS AREA



PLACED ON BOTH SIDES OF THE ROAD AND A FLASHING CONE LAMP IN THE MIDDLE TO MAKE DRIVERS AWARE OF THE ROAD CLOSURE.

**Legend**

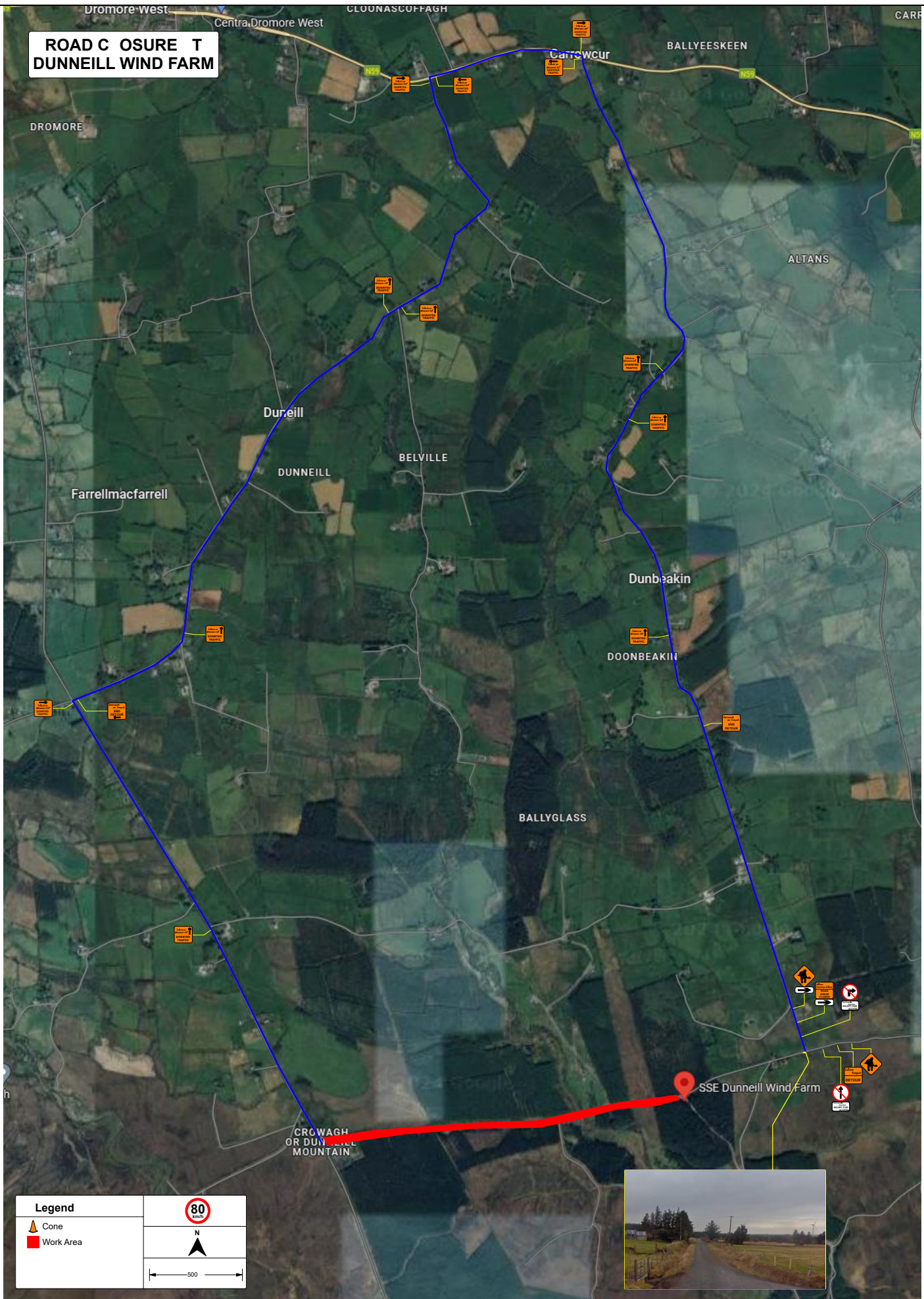
-  Cone
-  Work Area



Client:	RENCON_CIVILS_LTD	Designed:	CC	Drawn:	CC	Project No:	2403 051A
Project Title:	CABLE_WORKS_AT_DUNNEILL_WIND_FARM	Drawn:	CC	Checked:	SO	Revision No:	0
Drawn:	TM_PLAN_CABLE_WORKS_AT_DUNNEILL_WIND_FARM	Checked:	NTS	Date:	04/04/2024		
Date:	04/04/2024						



# ROAD CLOSURE TO DUNNEILL WIND FARM



<b>Legend</b>	
Cone	
Work Area	

